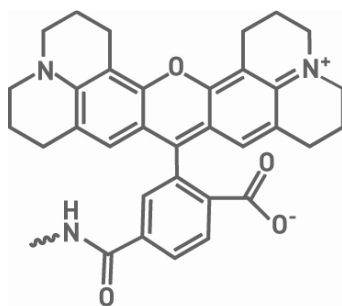


Rox™ NHS Ester

Structure



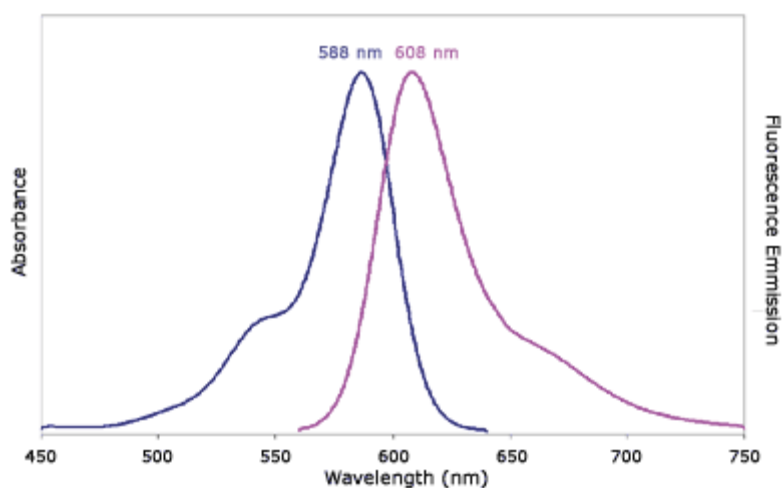
Key data

Ab_{max} 588 nm Em_{max} 608 nm

Extinction Coef (260 nm): 22,600
Extinction Coef (at absorbance max): 82,000

5' Mw: 695,8 g/mol
3' Mw: 833.0 g/mol

Spectra



With permission from IDT

Properties

ROX™ is carboxy-X-rhodamine. It is available only as an NHS ester and must be attached to an amino-modified oligonucleotide. Its spectral properties are similar to Texas Red®. Fluorophores from the rhodamine family, ranging from green (Rhodamine Green™, Em 531 nm) to red (ROX™, Em 608 nm) emission, are offered. Compared to the fluorescein family of dyes, rhodamine dyes are relatively resistant to photobleaching and can be used over a wider pH range. The quantum yield of free ROX is measured to 0.7 in pH 9.0 phosphate buffer.

