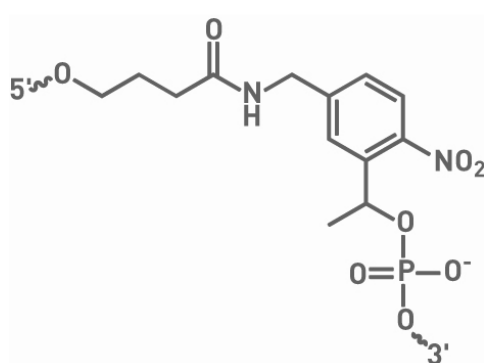


## PC (Photo Cleavable) Spacer

### Structure



### Key data

5' Mw: 344.3 g/mol  
Int Mw: 344.3 g/mol

### Properties

PC (Photo-Cleavable) Spacer can be placed between DNA bases or between the oligo and a 5'-modifier group. It offers a 10-atom spacer arm which can be cleaved with exposure to UV light in the 300-350 nm spectral range. Cleavage releases the oligo with a 5'-phosphate group.